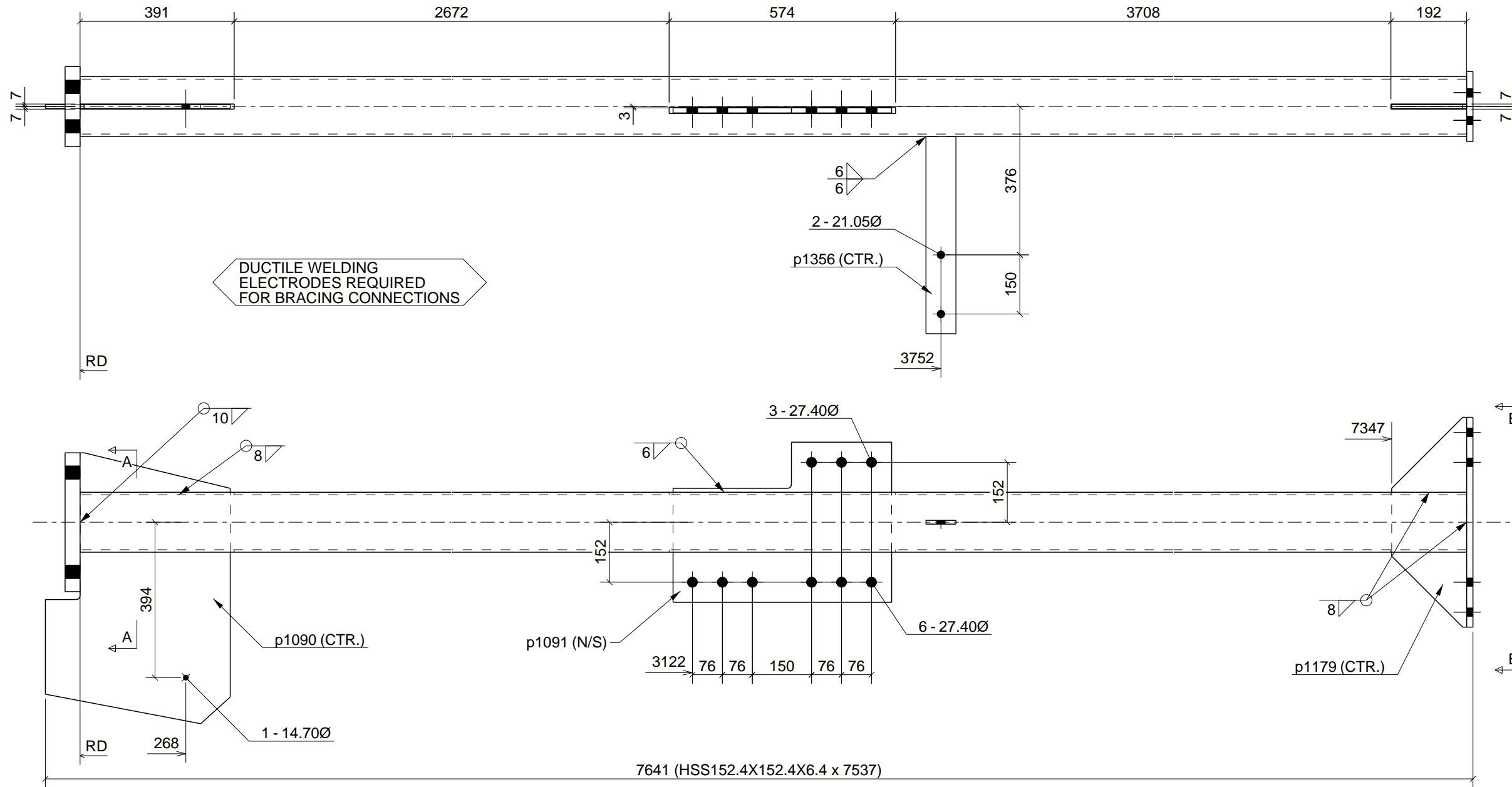


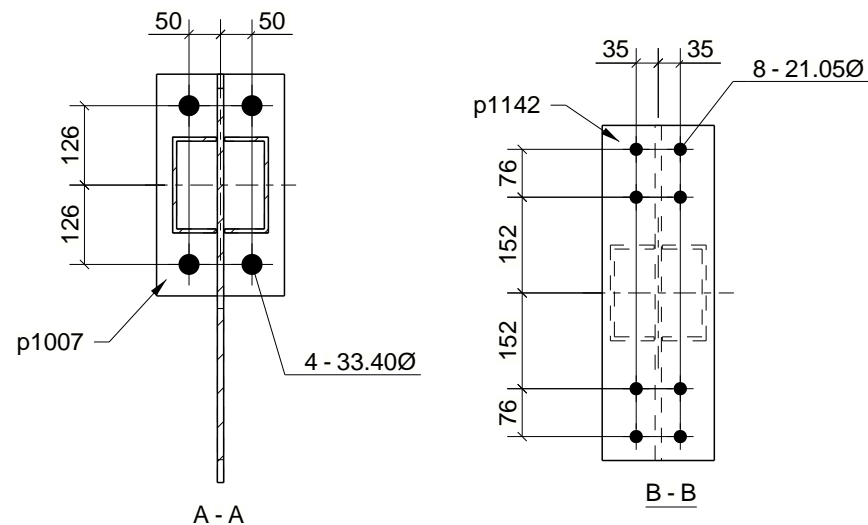
| | |
|---------------|------------------|
| GRID LOCATION | BOTTOM ELEVATION |
| 5/B-A | +9.480 |

| | | |
|-------------|------|------|
| | NAME | DATE |
| Comp By | | |
| Inspect By | | |
| Welder | | |
| Welder | | |
| Weld insp. | | |
| Final insp. | | |



7641 (HSS152.4X152.4X6.4 x 7537)

ONE - COLUMN - C1057



BILL OF MATERIAL

| MARK | QTY | DESCRIPTION | LENGTH | WEIGHT | REMARKS |
|---------------------------|-----|--------------------|--------|--------|-------------|
| C1057 | 1 | COLUMN | | | |
| C1057 | 1 | HSS152.4X152.4X6.4 | 7537 | 200 | PRIMER 350W |
| p1007 | 1 | PL38X203 | 352 | 21 | 300W |
| p1090 | 1 | PL10X469 | 687 | 20 | 300W |
| p1091 | 1 | PL13X406 | 554 | 19 | 300W |
| p1142 | 1 | FL16X178 | 532 | 12 | 300W |
| p1179 | 1 | PL10X190 | 532 | 5 | 300W |
| p1356 | 1 | FL10X76 | 500 | 3 | 300W |
| TOTAL WEIGHT THIS DRAWING | | | | 281 | |

| | | |
|---|----------------------------------|---------------|
| A | ISSUED FOR APPROVAL | 05/04/2020 |
| REV | DESCRIPTION | DATE |
| West Coast Steel Ltd. | | |
| 2990 Christmas Way, Coquitlam, BC, Tel: 604 554 0171 | | |
| DESCRIPTION | COLUMN | Ref. E100 |
| PROJECT NAME | CHILLIWACK VOLKSWAGEN DEALERSHIP | |
| DRAWN BY | WIM Inc. Steel Detailing | JOB No. |
| DATE DRAWN | 05/03/2020 | WCS-231 |
| | | DRG No. C1057 |