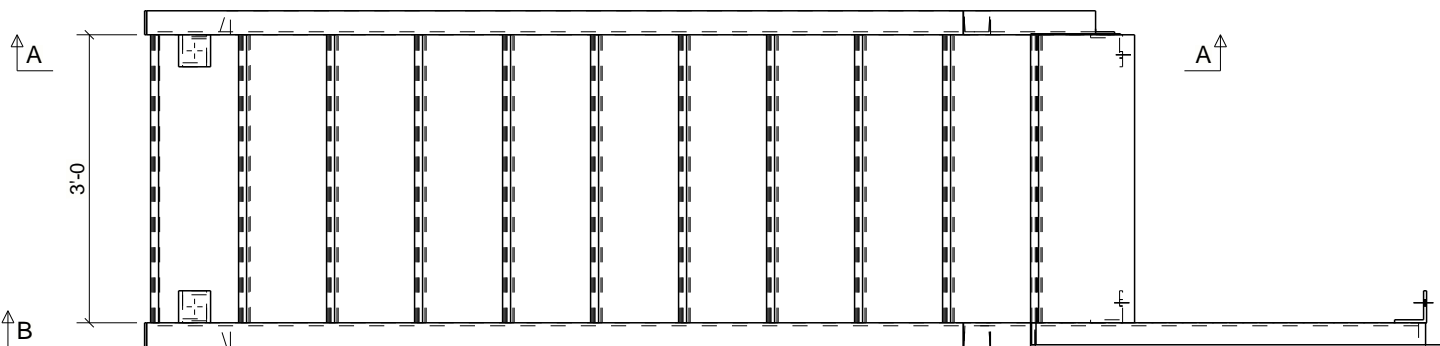
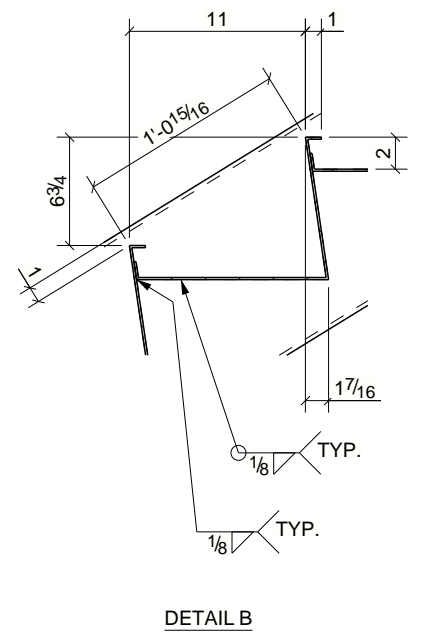
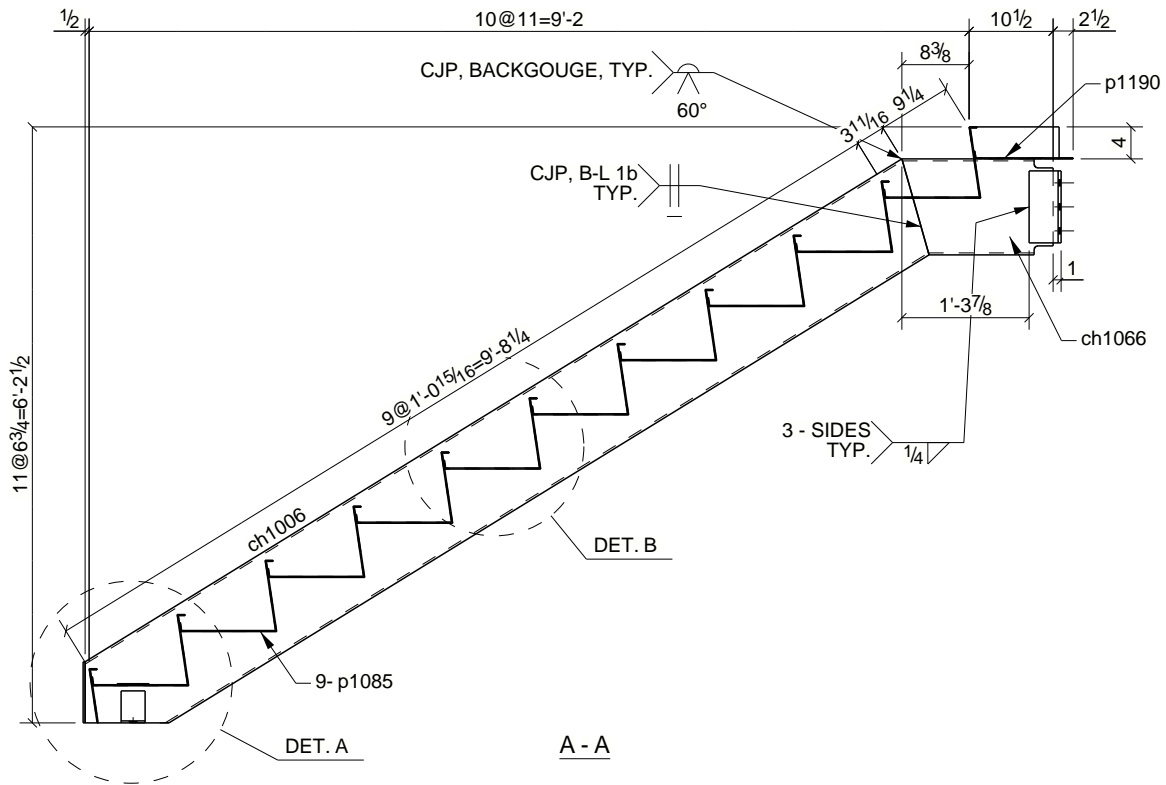
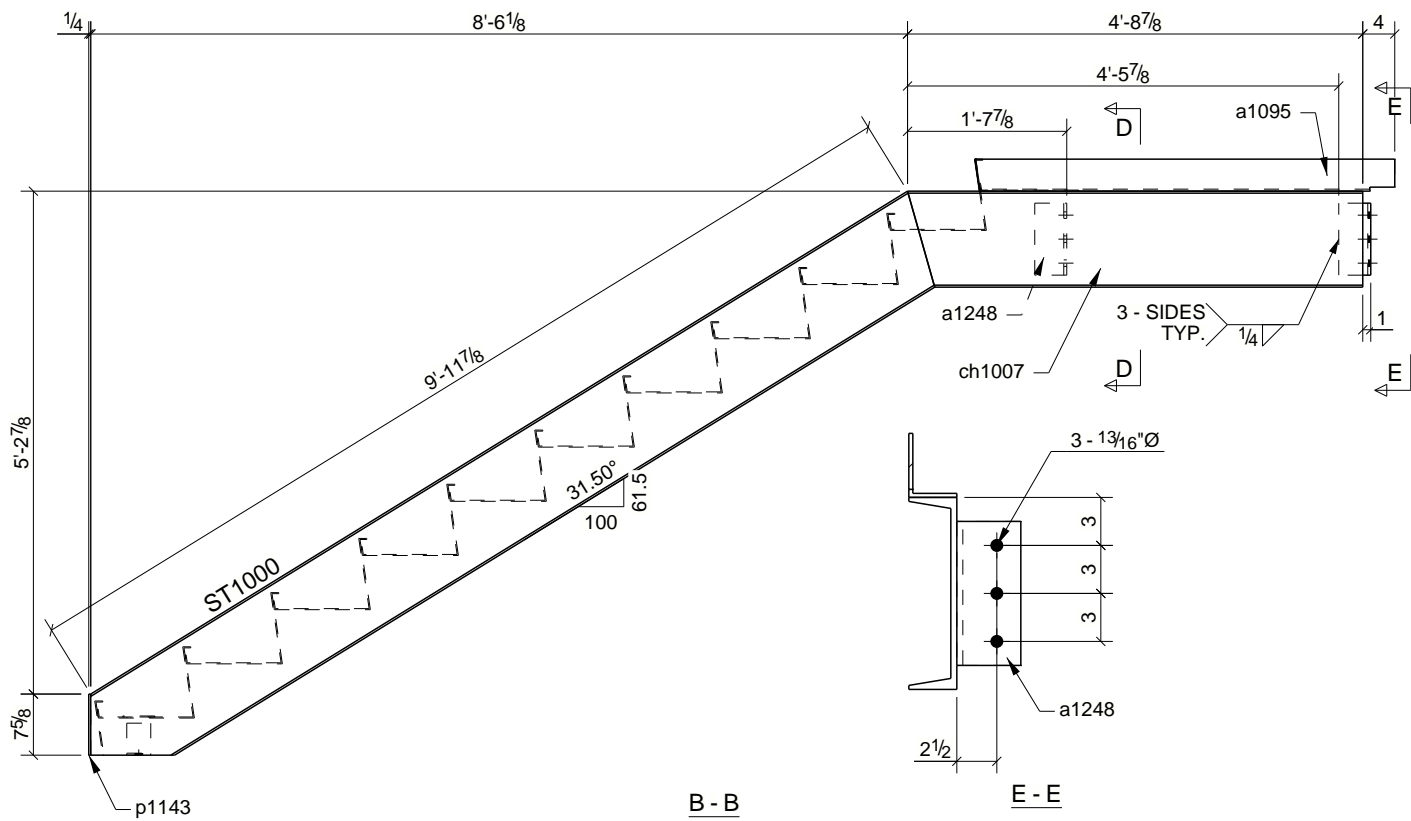
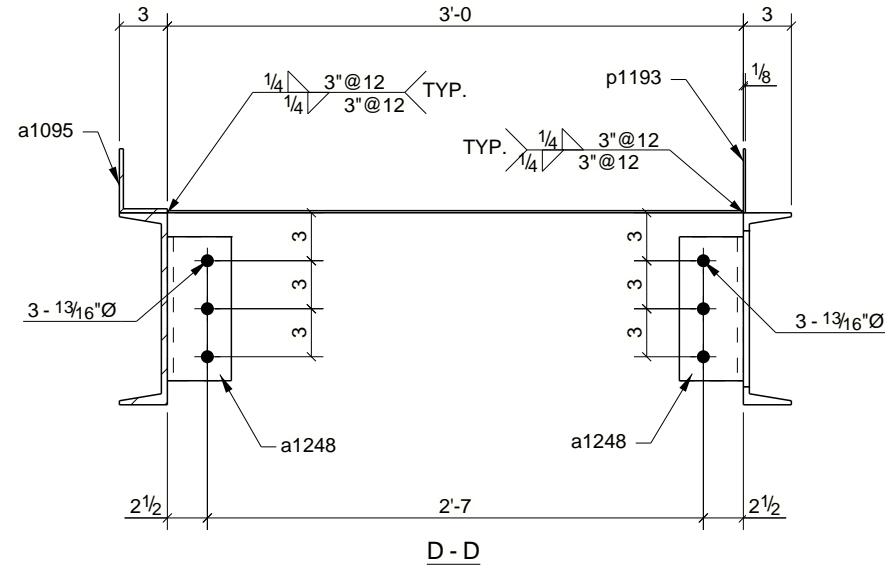
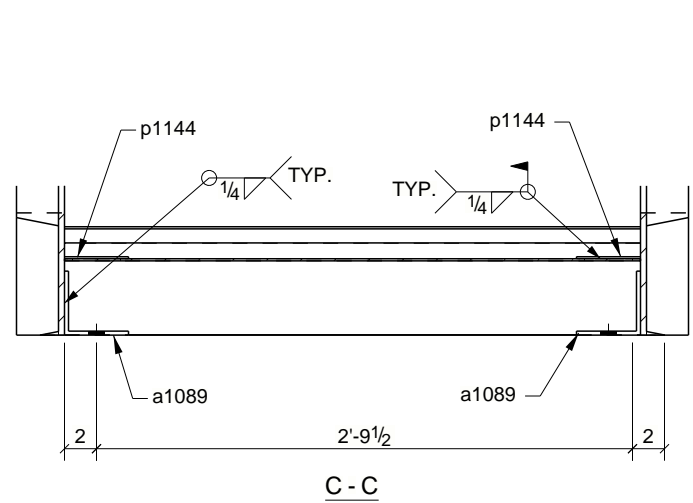
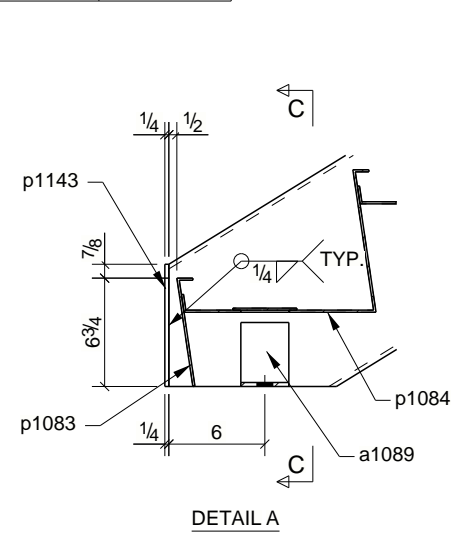


GRID LOCATION	BOTTOM ELEVATION
4a-3a/H-G	-0"



BILL OF MATERIAL

MARK	QTY	DESCRIPTION	LENGTH	WEIGHT(lbf)	REMARKS
ST1000	1	STAIR			Coating:
ST1000	1	C12X25	10'-3 7/8"	258	300W
a1089	2	L4X4X1/4	0'-3"	3	300W
a1095	1	L4X3X1/4	4'-4 1/2"	25	300W
a1248	3	L4X4X3/8	0'-9"	22	300W
ch1006	1	C12X25	10'-3 7/8"	258	300W
ch1007	1	C12X25	4'-8 7/8"	118	300W
ch1066	1	C12X25	1'-6 7/8"	39	300W
p1083	1	SHT10GAX7 9/16"	3'-0"	10	300W
p1084	1	SHT10GAX22 5/16"	3'-0"	30	300W
p1085	9	SHT10GAX22 5/16"	3'-0"	277	300W
p1143	2	FL1/4"X3"	0'-7 5/8"	3	300W
p1144	2	FL1/8"X4"	0'-4"	1	300W
p1152	1	FL1/8"X2 3/4"	0'-3 13/16"	0	300W
p1190	1	SHT10GAX13"	3'-0"	18	300W
p1193	1	FL1/8"X4"	0'-11 1/4"	2	300W
	6	3/4"Ø A325N BOLT	0'-2"		Site
TOTAL WEIGHT THIS DRAWING(lbf)				1066	

0	ISSUED FOR FABRICATION	10/25/2022
B	RE-ISSUED FOR APPROVAL	10/21/2022
A	ISSUED FOR APPROVAL	09/02/2022
REV	DESCRIPTION	DATE

ANVIL IRONWORKS Ltd.			
9795 Wittner Road, Kamloops, BC			
Tel: 250 573 1115			
DESCRIPTION	STAIR		
PROJECT NAME	TRUE CONSULTING BUILDING		Ref. E106
DRAWN BY	WIM Inc. Steel Detailing	JOB No.	DRG No.
DATE DRAWN	09/01/2022	22-8148	ST1000

	NAME	DATE
Comp By		
Inspect By		
Welder		
Welder		
Weld insp.		
Final insp.		