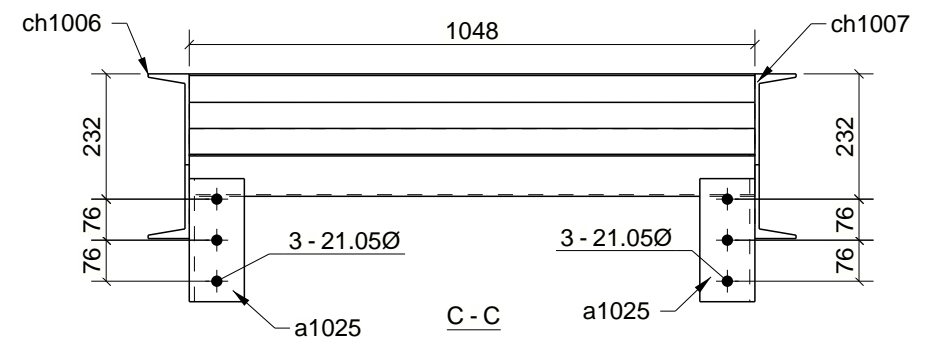


**ONE - STRINGER - ST1001**

**BILL OF MATERIAL**

MARK	QTY	DESCRIPTION	LENGTH	WEIGHT	REMARKS
ST1001	1	STRINGER			
ST1001	1	C310X30.8	6655	205	350W
a1001	1	L76X76X6.4	1048	8	350W
a1025	2	L102X102X9.5	228	7	350W
ch1005	1	C310X30.8	6655	205	350W
ch1006	1	C310X30.8	170	5	350W
ch1007	1	C310X30.8	170	5	350W
p1021	1	SHT12GAX196	1048	5	300W
p1022	1	SHT12GAX563	1048	14	300W
p1031	3	PL3X60	60	0	300W
p1374	2	FL6X76	276	2	300W
p1423	19	SHT12GAX563	1048	268	300W
p1477	2	PL10X127	216	4	300W
p1478	2	PL10X76	121	1	300W
p1485	1	PL3X209	1048	5	300W
p1498	2	FL6X76	194	1	300W
TOTAL WEIGHT THIS DRAWING				735	



A	ISSUED FOR APPROVAL	05/04/2020
REV	DESCRIPTION	DATE
<b>West Coast Steel Ltd.</b>		
2990 Christmas Way, Coquitlam, BC, Tel: 604 554 0171		
DESCRIPTION	STAIR	
PROJECT NAME	CHILLIWACK VOLKSWAGEN DEALERSHIP	
DRAWN BY	WIM Inc. Steel Detailing	JOB No.
DATE DRAWN	05/04/2020	DRG No.
	WCS-231	ST1001

Tekla Structures